



**Inductive displacement sensor**

Integral electronics

supply 22 ... 26VDC

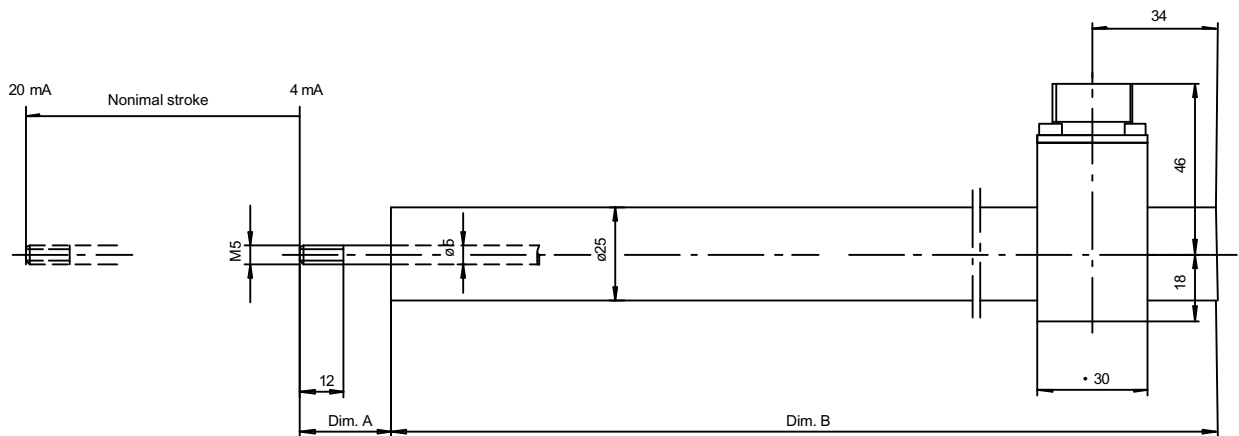
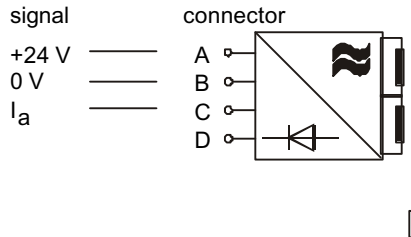
output 4 ... 20 mA

rugged design

DAA

MESSOTRON

**radial connector**  
mating connector supplied



Example for ordering: DAA 100 R 0,25%

|                                 |                                    | DAA 25 | DAA 50 | DAA 100 | DAA 150 | DAA 200 | DAA 250 |
|---------------------------------|------------------------------------|--------|--------|---------|---------|---------|---------|
| Electrical stroke               | mm                                 | ±12,5  | ±25    | ±50     | ±75     | ±100    | ±125    |
| Max. mechanical stroke          | mm                                 | 27     | 52     | 105     | 160     | 210     | 260     |
| Dimension A                     | mm                                 | 30     | 30     | 30      | 30      | 30      | 30      |
| Dimension B                     | mm                                 | 145    | 185    | 225     | 305     | 385     | 465     |
| Transducer weight               | g                                  | 240    | 300    | 360     | 500     | 610     | 750     |
| Core weight                     | g                                  | 20     | 25     | 30      | 45      | 55      | 70      |
| Supply **)                      | 22 ... 26 VDC / 40 mA, stabilized  |        |        |         |         |         |         |
| Output signal                   | 4 ... 20 mA                        |        |        |         |         |         |         |
| Allowable load                  | max. 400 Ohm                       |        |        |         |         |         |         |
| Static resolution               | virtually infinite                 |        |        |         |         |         |         |
| Cut-off frequency               | 100 Hz                             |        |        |         |         |         |         |
| Linearity *)                    | ±0,5% F.S.O. Option: ±0,25%        |        |        |         |         |         |         |
| Temperature coefficient of zero | ±0,1% / 10K                        |        |        |         |         |         |         |
| Temperature coefficient of span | ±0,2% / 10K                        |        |        |         |         |         |         |
| Operating temperature           | 0°C ... +60°C                      |        |        |         |         |         |         |
| Protection class                | IP 67 except for connector (IP 65) |        |        |         |         |         |         |

\*) Select option for order

\*\*) Please enquire 4-wire versions with a) +24VDC or b) ±15VDC / 40 mA, stab.

|  |  |   |
|--|--|---|
|  | <b>DAA series</b><br><b>25 ... 1000 mm</b> | Data sheet<br><b>42.01.00</b><br>Page 1 |
|  |  | Issue 09/03                             |

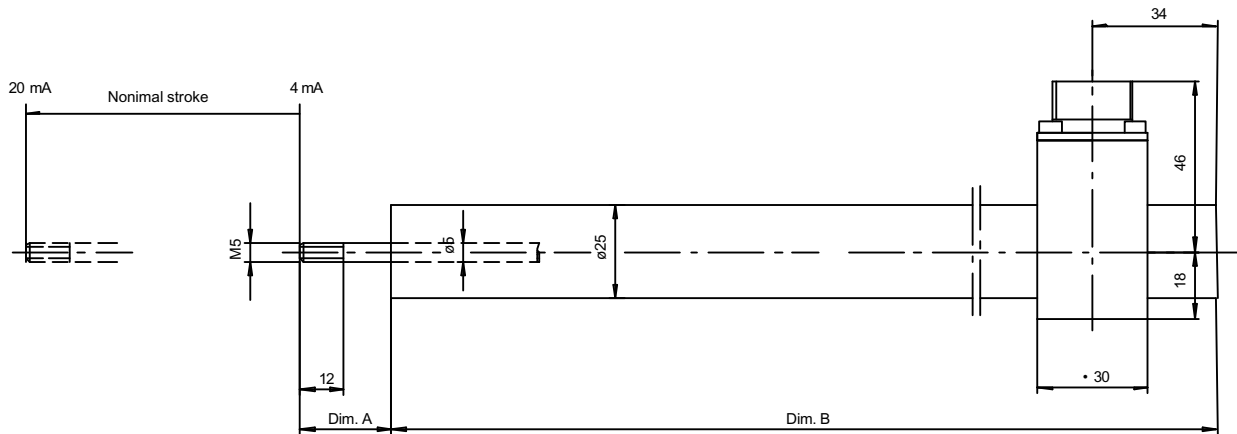
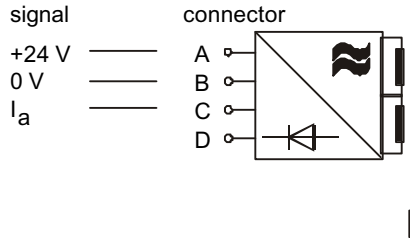
# Inductive displacement sensor

Integral electronics    supply 22 ... 26VDC    output 4 ... 20 mA    rugged design

# DAA

# MESSOTRON

**radial connector**  
mating connector supplied



Example for ordering: DAA 500 R 0,25%

|                                 |                                    | DAA 300 | DAA 400 | DAA 500 | DAA 600 | DAA 800 | DAA 1000 |
|---------------------------------|------------------------------------|---------|---------|---------|---------|---------|----------|
| Electrical stroke               | mm                                 | ±150    | ±200    | ±250    | ±300    | ±400    | ±500     |
| Max. mechanical stroke          | mm                                 | 315     | 420     | 520     | 630     | 830     | 1030     |
| Dimension A                     | mm                                 | 40      | 40      | 40      | 40      | 40      | 40       |
| Dimension B                     | mm                                 | 480     | 600     | 730     | 860     | 1120    | 1400     |
| Transducer weight               | g                                  | 800     | 1000    | 1200    | 1400    | 1800    | 2200     |
| Core weight                     | g                                  | 85      | 105     | 125     | 145     | 190     | 230      |
| Supply **)                      | 22 ... 26 VDC / 40 mA, stabilized  |         |         |         |         |         |          |
| Output signal                   | 4 ... 20 mA                        |         |         |         |         |         |          |
| Allowable load                  | max. 400 Ohm                       |         |         |         |         |         |          |
| Static resolution               | virtually infinite                 |         |         |         |         |         |          |
| Cut-off frequency               | 100 Hz                             |         |         |         |         |         |          |
| Linearity *)                    | ±0,5% F.S.O. Option: ±0,25%        |         |         |         |         |         |          |
| Temperature coefficient of zero | ±0,1% / 10K                        |         |         |         |         |         |          |
| Temperature coefficient of span | ±0,2% / 10K                        |         |         |         |         |         |          |
| Operating temperature           | 0°C ... +60°C                      |         |         |         |         |         |          |
| Protection class                | IP 67 except for connector (IP 65) |         |         |         |         |         |          |

\*) Select option for order

\*\*) Please enquire 4-wire versions with a) +24VDC or b) ±15VDC / 40 mA, stab.

|  |   |
|--|---|
| <b>DAA series</b><br><b>25 ... 1000 mm</b> | Data sheet<br><b>42.01.00</b><br>Page 2 |
|  | Issue 09/03                             |

Sensor customisation possible

Subject to change without prior notice  
09/03

# Inductive displacement sensor

integral electronics

supply 22 ... 26VDC

output 4 ... 20 mA

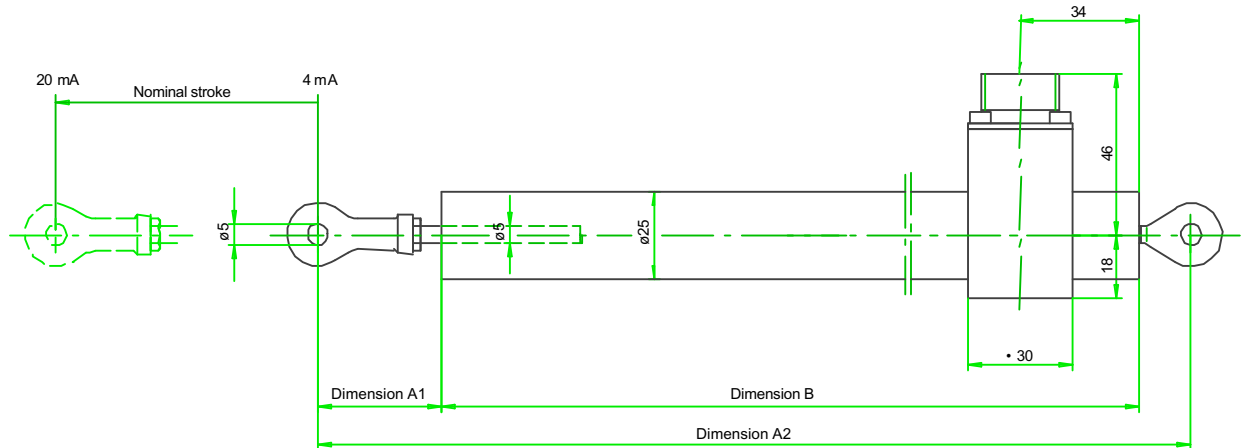
rugged design

# DAA

# MESSOTRON

## Version „DAA...G“ with ball eyes, guided core and radial connector

Mating connector supplied  
ball eye on one-end-only optional



Example for ordering: DAA 500 RG 0,25%

|                   |       | DAA 25 | DAA 50 | DAA 100 | DAA 150 | DAA 200 | DAA 250 |
|-------------------|-------|--------|--------|---------|---------|---------|---------|
| Dimension A1      | mm    | 35     | 35     | 35      | 40      | 40      | 40      |
| Dimension A2      | mm    | 225    | 265    | 305     | 390     | 470     | 550     |
| Dimension B       | mm    | 175    | 215    | 255     | 335     | 415     | 495     |
| Transducer weight | g     | 310    | 370    | 430     | 570     | 680     | 830     |
| Core weight       | g     | 30     | 35     | 40      | 55      | 65      | 80      |
| Protection class  | IP 65 |        |        |         |         |         |         |

|                   |       | DAA 300 | DAA 400 | DAA 500 | DAA 600 | DAA 800 | DAA 1000 |
|-------------------|-------|---------|---------|---------|---------|---------|----------|
| Dimension A1      | mm    | 40      | 45      | 45      | 50      | 50      | 50       |
| Dimension A2      | mm    | 630     | 775     | 905     | 1040    | 1300    | 1580     |
| Dimension B       | mm    | 575     | 715     | 845     | 975     | 1235    | 1515     |
| Transducer weight | g     | 970     | 1170    | 1370    | 1570    | 1970    | 2370     |
| Core weight       | g     | 95      | 115     | 135     | 155     | 200     | 240      |
| Protection class  | IP 65 |         |         |         |         |         |          |

other technical data see page 1/2

|                               |   |   |
|-------------------------------|---|---|
| Sensor customisation possible | <b>DAA series</b><br><b>25 ... 1000 mm</b><br>(Version „G“) | Data sheet<br><b>42.01.00</b><br>Page 3 |
|                               |   | Issue 09/03                             |

Sensor customisation possible

Subject to change without prior notice  
09/03



[www.instrumentation.it](http://www.instrumentation.it)

**INSTRUMENTATION DEVICES SRL**

Via Acquanera 29, 22100 COMO (Italy) tel. +39.031.525391 - fax +39.031.507984 - info@instrumentation.it