

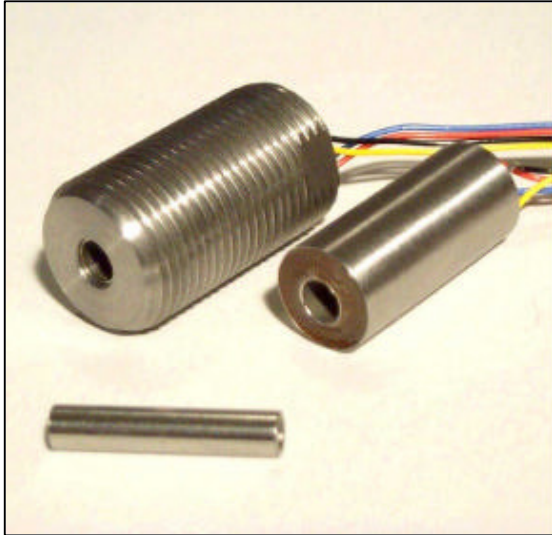


Inductive Displacement Sensor

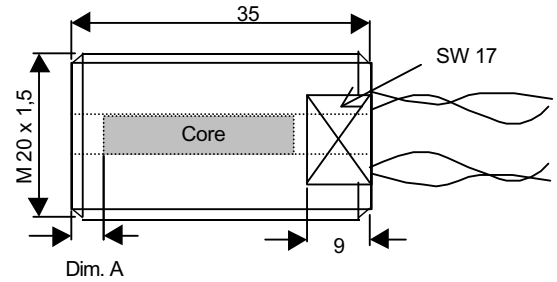
for hydraulic and pneumatic applications

DM (pressure resistant up to 200 bar)

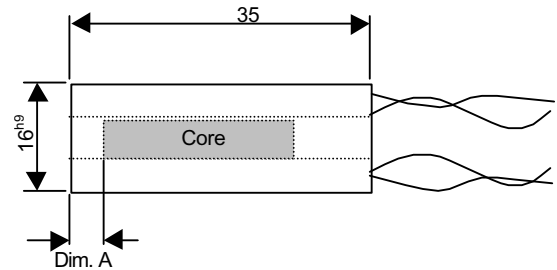
MESSOTRON



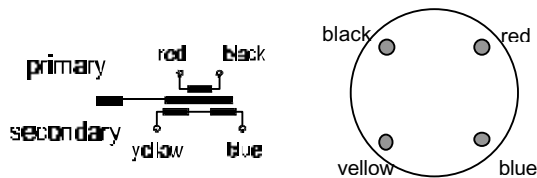
DM 16 G Threaded case



DM 16 Standard case

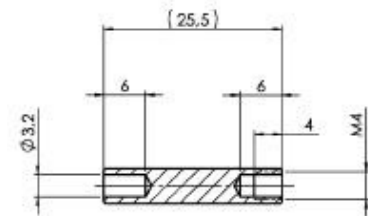


Leads connection



Core

magnet. steel



		DM 16
Nominal stroke up to	mm	±8 (= 16)
Ext. stroke up to (frequency- dependent)	mm	±10 (= 20)
Dimension A	mm	±0.5 mm 2,4
Transducer weight	g	approx. 50
Core weight (w/o rod)	g	approx. 3
Sensitivity	mV/V/mm	typical 40
Primary impedance (core @ zero)	Ohm	> 400
Excitation	V _{eff}	max. 20
Excitation frequency	kHz	1 ... 10
Non-linearity for ±5 mm stroke	% ref. to ±8 (= 16)	±1,0
Non-linearity above ±5 mm stroke		frequency dependent
Operating temperature	°C	-30 ... +100
Protection class		IP 68

Note: Use non-magnetic material for core rod

	DM series 16 mm	Data sheet 21.01.00
		Issue 03/03