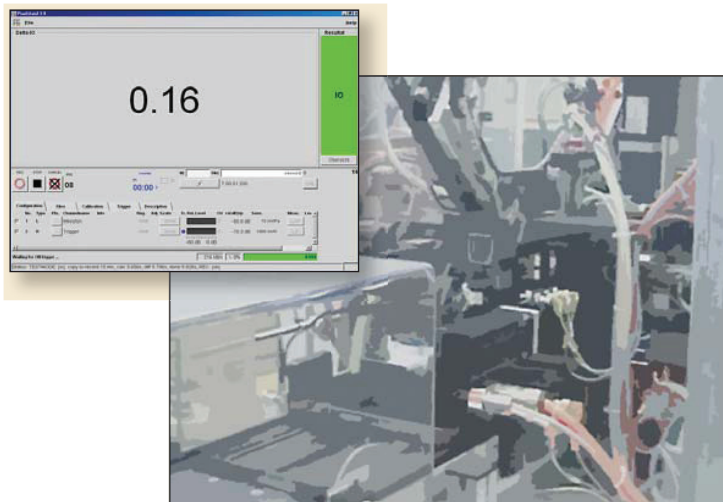


# siTest

Quality testing through acoustic and vibration measurement in production



**siTest** optimally monitors the quality of your products in respect to acoustics and vibration. The applications range from 100% testing in production to the determination of complex performance characteristics using samples.

## ■ Reliable detection

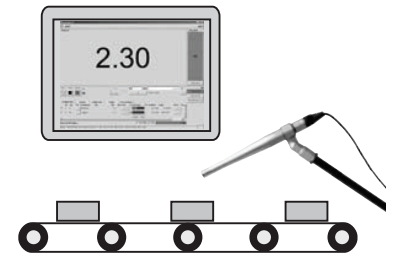
**siTest** listens with an expert's ear. The detection rates therefore attain the level of trained staff in the assembly shop, without the fluctuations and drift in criteria that a subjective evaluation always entails.

## ■ Fast relearning

If test patterns change, operators in the production department can easily have the system relearn for the configured type of noise at any time.

## ■ Short installation time and high availability

Standard hardware that is simultaneously economical and robust allows fast installation and a long service life, along with very high availability due to easy component replacement.

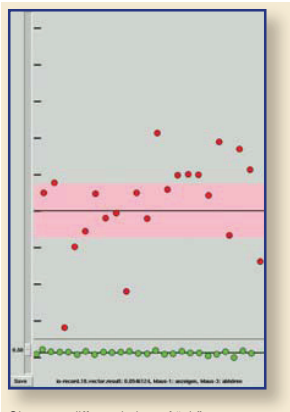


## Applications

- Inspection of purchased items
- Final inspection of the product
- Classification according to different product qualities
- Testing of complex performance characteristics

## Operating conditions

- Can be used in assembly plants even with ambient levels of around 80 dB(A)
- Integration in the system control (PLC etc.)
- Measuring processes can be controlled via various interfaces



Clear cut differentiation of "ok" and "not ok" cases

## Realistic noise identification

In comparison to standard acoustic methods, **siTest** achieves considerably better differentiation in production testing. This is due to a realistic reproduction of the necessary detection processes in hearing. For this purpose, a wide range of acoustic processing methods are available in order to adapt to very different requirements.

This makes it possible to automate acoustic quality control in many areas of production control, since triggering by non-relevant artifacts, such as ambient noise, is strongly reduced or even prevented entirely.

## Distance measure

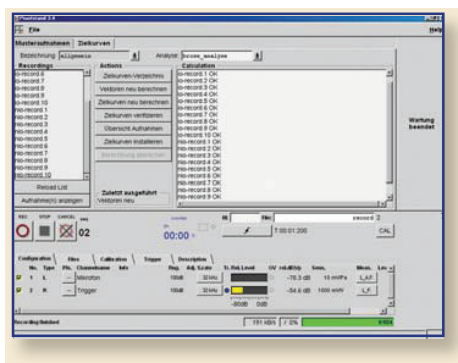
**siTest** supplies a single-number value to indicate the difference from the selected reference pattern for each test object. The acceptable difference can be adjusted if needed. This makes it possible to monitor the drift in production and correct it if necessary.

## All-round service

The functionality and detection performance of **siTest** is adapted to your requirements, and it is installed ready for operation. This provides you with expert acoustic knowledge in a productive form.

## Remote administration

**siTest** can be configured and serviced via a network/modem. As a result, adjustments and extensions can be implemented in a very short time.



Fast relearning of new noise patterns

Presented by:



Bunsenstraße 9c ■ Tel: +49 (0) 5 51 5 48 58 - 0 ■ E-Mail: info@akutech.de  
D-37073 Göttingen ■ Fax: +49 (0) 5 51 5 48 58 - 28 ■ Web: www.akutech.de

Status March 2009 / Product Info No.: 090312 / Logos and product names are all the registered trademarks of their owners.

## Features

- Customer-specific adaptation of functionality
- High operational safety and availability in continuous use
- Remote administration/remote maintenance possible

## Hardware configuration

- Standard industrial PC
- Data acquisition for 1 to >100 sensor channels
- Acoustics, vibration and other variables can be combined
- Control via status line/serial/network etc.

## Interaction

- Clear status feedback
- Can be used even in relatively loud environments
- New analyses can be added and selected
- Option: control of multi-stage measurement cycles by external systems
- Option: statistical analysis of measured data

