



PTA229 CANopen

ACCURATE MEASUREMENT

INDUSTRIAL



- ▶ **Accurate Pressure Sensor**
- ▶ **Built in Digital Electronic**
- ▶ **CANopen protocol via CANbus**
- ▶ **Large Choice of Threads & Electrical Connectors**
- ▶ **All Stainless Steel Construction**

Technical Specifications	PTA229 CANopen
Pressure Ranges (FS)	Barometric : 700-1200mbar absolute 200 / 350 / 700 / 1000mbar / 2 / 3 / 5 / 10 / 20 / 40 / 100 / 250 / 400 / 600bar ± 1bar; -1/+2bar, -1/+3bar; -1/+5bar; -1/+10bar 3 / 5 / 10 / 15 / 30 / 40 / 70 / 150 / 300 / 500 / 1500 / 3000 / 5000 / 8000PSI ± 14,5PSI, -14,5/+30PSI, -14,5/+40PSI; -14,5/+70PSI; -14,5/+150PSI
Type	Absolute, Gage, Sealed Gage (for ranges > 40bar)
Safe Overload / Burst Pressure	150%FS / 300%FS
Power Supply	8 to 30Vdc
Consumption	max. 500mW
Configuration	Bitrate and address by LSS
Bitrates	10kBit/s to 1MBit/s
Protocol	CANopen DS-404
Combined Non Linearity & Hysteresis	± 0,1%FS
Option	-
Non Repeatability	± 0,02%FS typ.
Signal Bandwidth (electronic)	16bit / 20ms
Option	-
Insulation	> 1000MΩ @ 50Vdc
Compensated Temperature	0 to +60°C / 32 to +140°F
Option	-25 to +85°C / -13 to +185°F
Operating Temperature	-40 to +85°C / -40 to +185°F
Combined thermal zero & sensitivity shifts	± 2.10 ⁻⁴ FS/°C
Option	-
Long Term Stability	± 0,1%FS/year typ.
Constant acceleration in linear vibrations	± 0,02%FS/g (frequency 20-2000Hz, 50g max.)
Mechanical Shock	100g ½ sinus 1ms
Electrical Protection	Protected against polarity inversion
EMC Protection	Compliant to EN50082
Standard Electrical Connection	MIL-C26482 (6 pins); male connector M12 (5 pins)
Standard Mechanical Connection	1/4 Gaz; M14x1,5; 1/4 NPT (males)
Option	7/16-20 UNJF; M10x1 male; 1/4 Gaz female; 1/2 Gaz male; M10x1 male with 120° cone
Material(s) of Wetted Parts	Stainless Steels 316L (1.4404), 15-5PH (1.4545) and 17-4PH (1.4542)
Weight	< 130g without cable
Enclosure Protection	IP65 for Sealed Gage & Absolute
Accessories delivered with the sensor	Calibration certificate or Datas in pressure and temperature (option)



E.F.E.

L'Essor Français Electronique

Head Office: 16 rue Porte à Bateaux – 27540 Ivry la Bataille – France

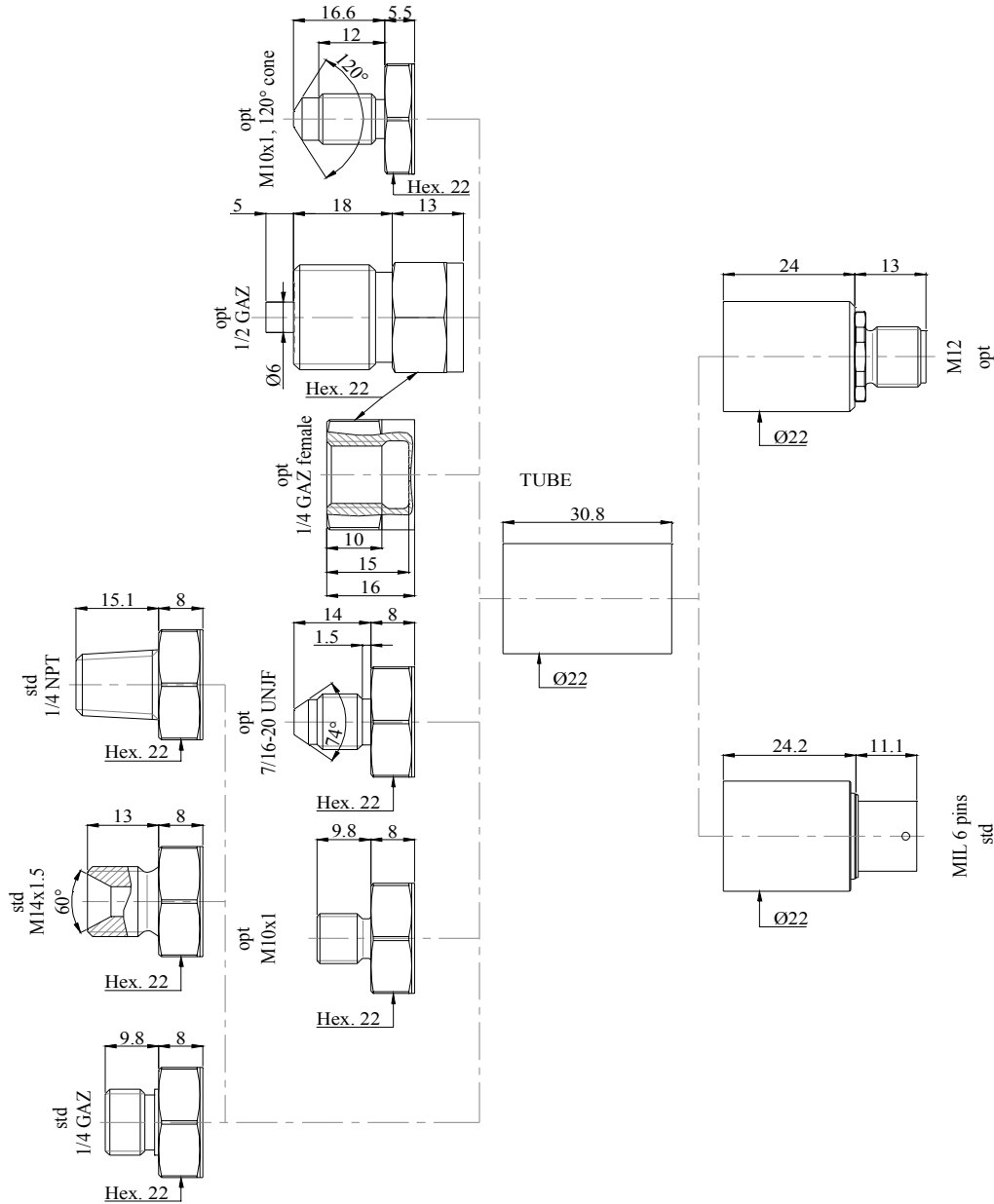
Tel: 33 (0)2.32.22.35.05 – Fax: 33 (0)2.32.36.93.08 – www.efe-sensor.com



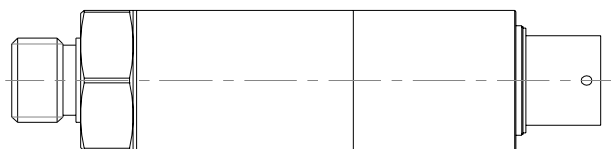
**PTA229
CANopen**

**ACCURATE MEASUREMENT
GRANDE PRECISION**

PLAN / DRAWING



SCALE 1:1



E.F.E.

L'Essor Français Electronique

**Head Office: 16 rue Porte à Bateaux – 27540 Ivry la Bataille – France
Tel: 33 (0)2.32.22.35.05 – Fax: 33 (0)2.32.36.93.08 – www.efesensor.com**

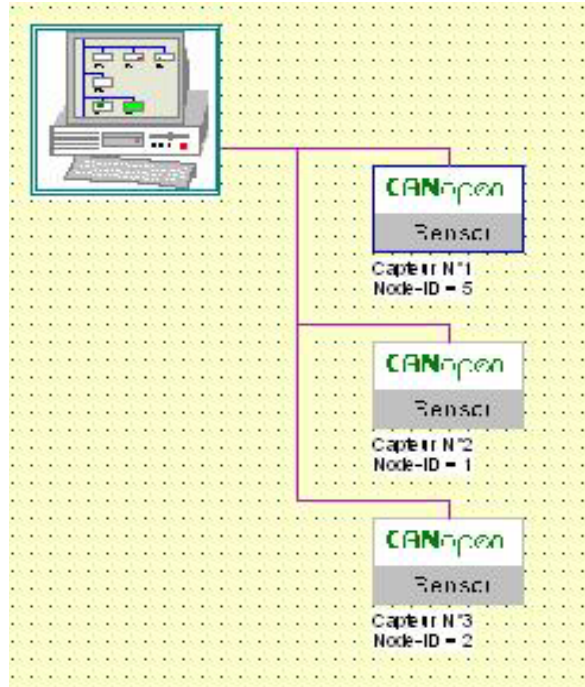


**PTA229
CANopen**

PACK CANopen Hardware & Software



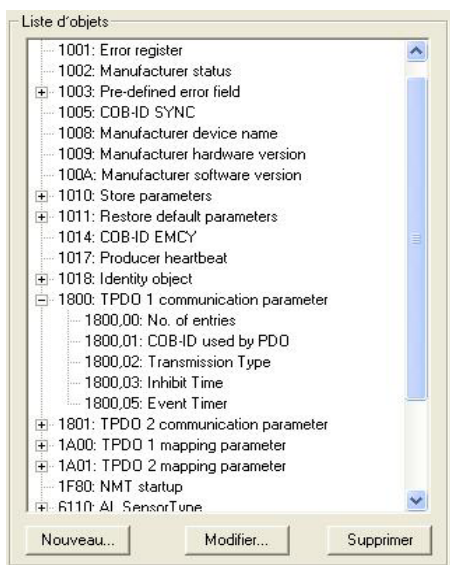
Lecture de la pression / Pressure Reading



Interface graphique / graphic interface



Autodétection des nœuds / Node self detection



Bibliothèque d'objets / Object Dictionary



Coffret de conversion CANopen-USB et d'alimentation / Box including CANopen to USB converter and power



E.F.E.

L'Essor Français Electronique

Head Office: 16 rue Porte à Bateaux – 27540 Ivry la Bataille – France

Tel: 33 (0)2.32.22.35.05 – Fax: 33 (0)2.32.36.93.08 – www.efc-sensor.com



PTA220		ORDER CODE						
Complete Reference	PTA22 X - X - XXX - XXX - XX - XX - XX - X XX - XX							
Model	Pressure sensor for Accurate Measurement Ø 22mm	PTA						
		22						
Output Signal	CANopen Digital Output							
		9C						
Material of wetted parts	Stainless Steel		S					
Pressure Ranges	Unidirectional example : 20bar Barometric : 700-1200mbar Bidirectional example : -1/+3bar			20 700/1200 -1/3				
Pressure Unit	mbar bar PSI				mbar bar PSI			
Operational Mode	Gage Sealed Gage Absolute					G SG A		
Mechanical Thread	1/4 Gaz male M14x1,5 male 1/4 NPT male 7/16-20 UNJF male M10x1 male 1/4 Gaz female 1/2 Gaz male M10x1 male with 120° cone						07 01 13 10 02 08 06 21	
Electrical Connection	MIL-C26482 (6 pins) Male connector M12 (5 pins)						03 07	
Compensated Temperature	0 to +60°C / 32 to +140°F -25 to +85°C / -13 to +185°F							A B
Accuracy	± 0,1%FS (Standard)							0
Thermal Shifts	± 2.10 ⁻⁴ FS/°C (Standard)							0
Options	N/A EPDM O'ring Specific settings							00 E S



E.F.E.

L'Essor Français Electronique

Head Office: 16 rue Porte à Bateaux – 27540 Ivry la Bataille – France

Tel: 33 (0)2.32.22.35.05 – Fax: 33 (0)2.32.36.93.08 – www.efe-sensor.com